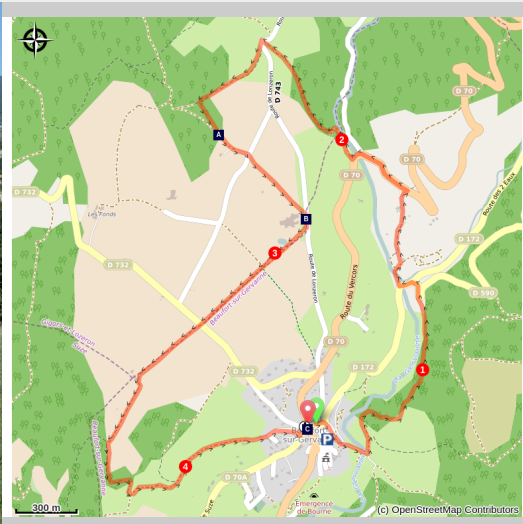


# The flavor walk

Gervanne - Beaufort-sur-Gervanne



(N. Antoine)



*Discover Beaufort-sur-Gervanne and its surroundings, from where there is already a little air of Provence!*

After crossing part of the beautiful village of Beaufort, you will cross the surrounding countryside where breeding and polyculture perpetuate the important and diverse agricultural tradition in these places.

## Useful information

---

Practice : By walk

---

Duration : 2 h 30

---

Length : 7.7 km

---

Trek ascent : 242 m

---

Difficulty : Moyen

---

Type : Boucle

---

Themes : Agriculture et Savoir faire, Flore

# Trek

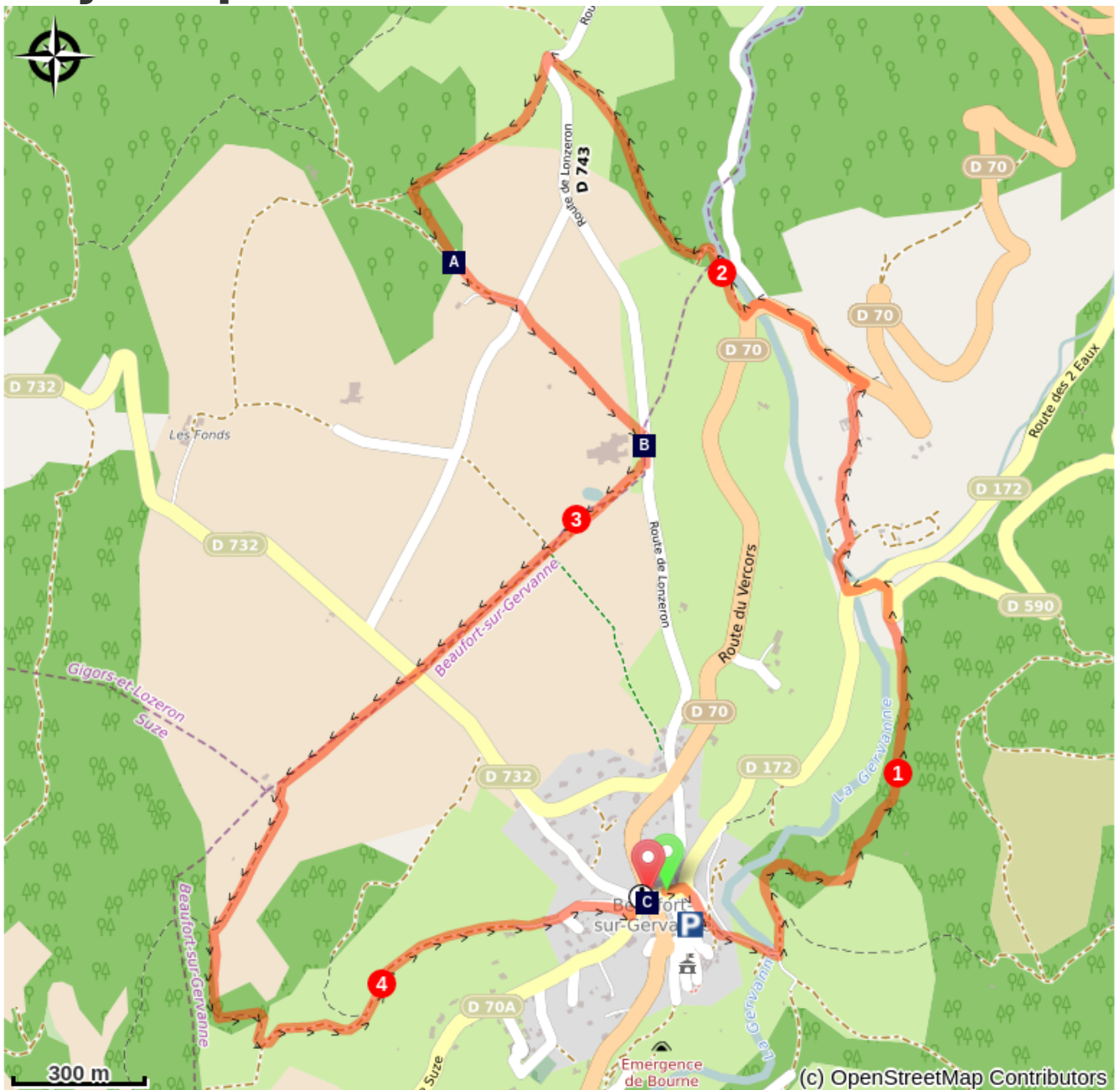
Departure : Beaufort-sur-Gervanne

Arrival : Beaufort-sur-Gervanne

Markings :  PR  GR  GTV à pied

Departure from Beaufort-sur-Gervanne (Parking du Champ de foire), get off at the esplanade and take GR 9 to Pont Bossu 1. Cross it and take the road on the left, on the east side of the Gervanne River, to join La Scie 2 upstream. Pass on the bridge, then on the right, follow GR 9 again to reach La Belonne 3, go left on the road to Plan de Baix (beware of vehicles), to reach the stream "Rieussec", then Jozonières 4). Continue crossing the road again towards Les Trois Prés 5 (always follow the yellow and green markings between each directional sign). From there, go through Les Chaux de Lozeron 6 in the middle of the dry lawns and continue along a segment of the trail of discovery of the plateau de Chaux (panels on the biodiversity of this sector). Continue to the Lozeron road and past the Domaine des Arômes 7 to the right at the crossroads Les Chaux 8 and the road from Gigors to Les Frédières 9. At the edge of the wood go up to the left in its edge and, at the top, join by the ruin the Chemin des Auches below. It is by this pleasant road overhanging Beaufort and bordered of varied landscapes that ends this beautiful hike.

# On your path...



Plateau des Chaux (A)  
Beaufort-sur-Gervanne (C)

Domaine of Arômes (B)

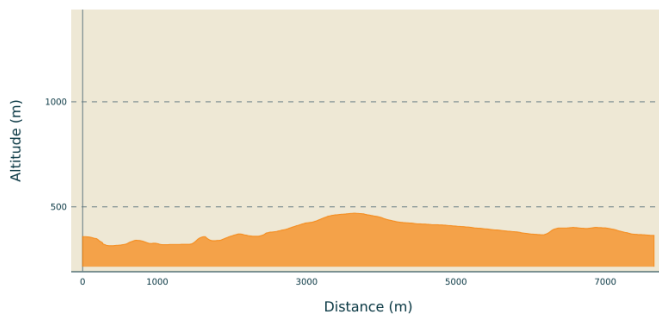
# All useful information

## **Advices**

Use the passageways to cross the fences, close the gates and barriers, stay on the marked paths.

Stay on the marked paths is also respect private property.

## **Altimetric profile**



Min elevation 315 m  
Max elevation 470 m

## **Transports**

Ligne de bus régulière [n°25](#) du Conseil Départemental de la Drôme.

## **Access**

From Crest, follow the D 93 then the D 70 in the direction of Beaufort-sur-Gervanne, park in the "Champ de Foire" car park.

## **Advised parking**

Parking said "du champ de foire"

## **Information desks**

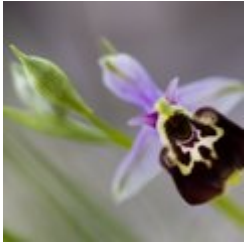
Office de tourisme du Pays de Crest  
Saillans  
Place du Général de Gaulle, 26400  
Crest

accueil@coeurdedrome.com  
Tel : 04 75 25 11 38  
<https://www.valleedeladrome-tourisme.com/>

Point info tourisme Beaufort-sur-Gervanne  
Route de Plan-de-Baix, 26400  
Beaufort-sur-Gervanne  
Tel : 04 75 25 11 38  
<http://www.gervanne-sye.com/>

# On your path...

---



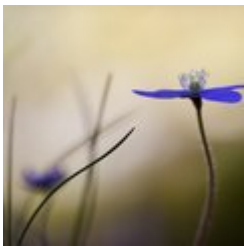
## Plateau des Chaux (A)

The Plateau de Chaux is a place where biodiversity is rich. The agricultural practices allow to host remarkable species and an important biological diversity (messengers, avifauna, orchids, insect pollinators).

Throughout the valley of the Gervanne, dry lawns, slopes, clear forests and thorny moors abound of orchids from April to June. They are all protected. Do not pick them!

Attribution : S.M Booth

---



## Domaine of Arômes (B)

The domaine of Arômes is a botanical garden of the Sanoflore laboratory, aromatic and medicinal plants are grown there in organic farming. The Sanoflore laboratory specializes in the distillation and production of essential oils.

Attribution : S.M Booth

---



## Beaufort-sur-Gervanne (C)

With its vaulted passages, its old lanes full of history, its houses imbricated one in the other, Beaufort emits a little air of Provence. On the village square, the keep of an old castle, converted into a public garden will welcome you for a short stop. But it is especially in the Temple that the history of the village is read. Beaufort was indeed an important place of Protestantism.

Attribution : PNRV