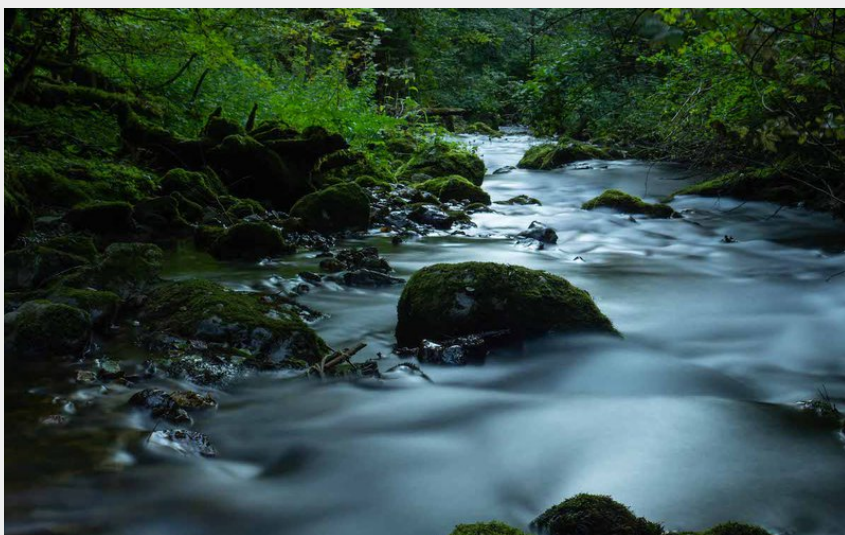
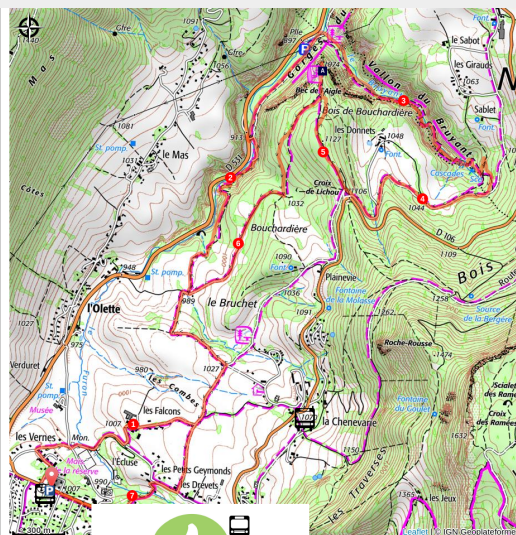


# The Bec de l'Aigle and the Gorges du Bruyant

4 Montagnes - Lans-en-Vercors



(M. Rocheblave)



*Join the deep gorges of Furon and the bubbling of its limpid waters. This haven of peace classified because of its ecological, faunistic and floristic interest gives a space of relaxation, discovery, freshness and conviviality.*

After a departure from the old tram station, the hike becomes progressively wilder, reaching the Gorges du Bruyant (a site classified since 1977), then a picturesque path along the river Furon.

## Useful information

Practice : By walk

Duration : 4 h

Length : 12.9 km

Trek ascent : 448 m

Difficulty : Moyen

Type : Boucle

Themes : Géologie, Histoire et patrimoine, Accessible en transport en commun

# Trek

Departure : The Tramway, Tourist Office of Lans-en-Vercors

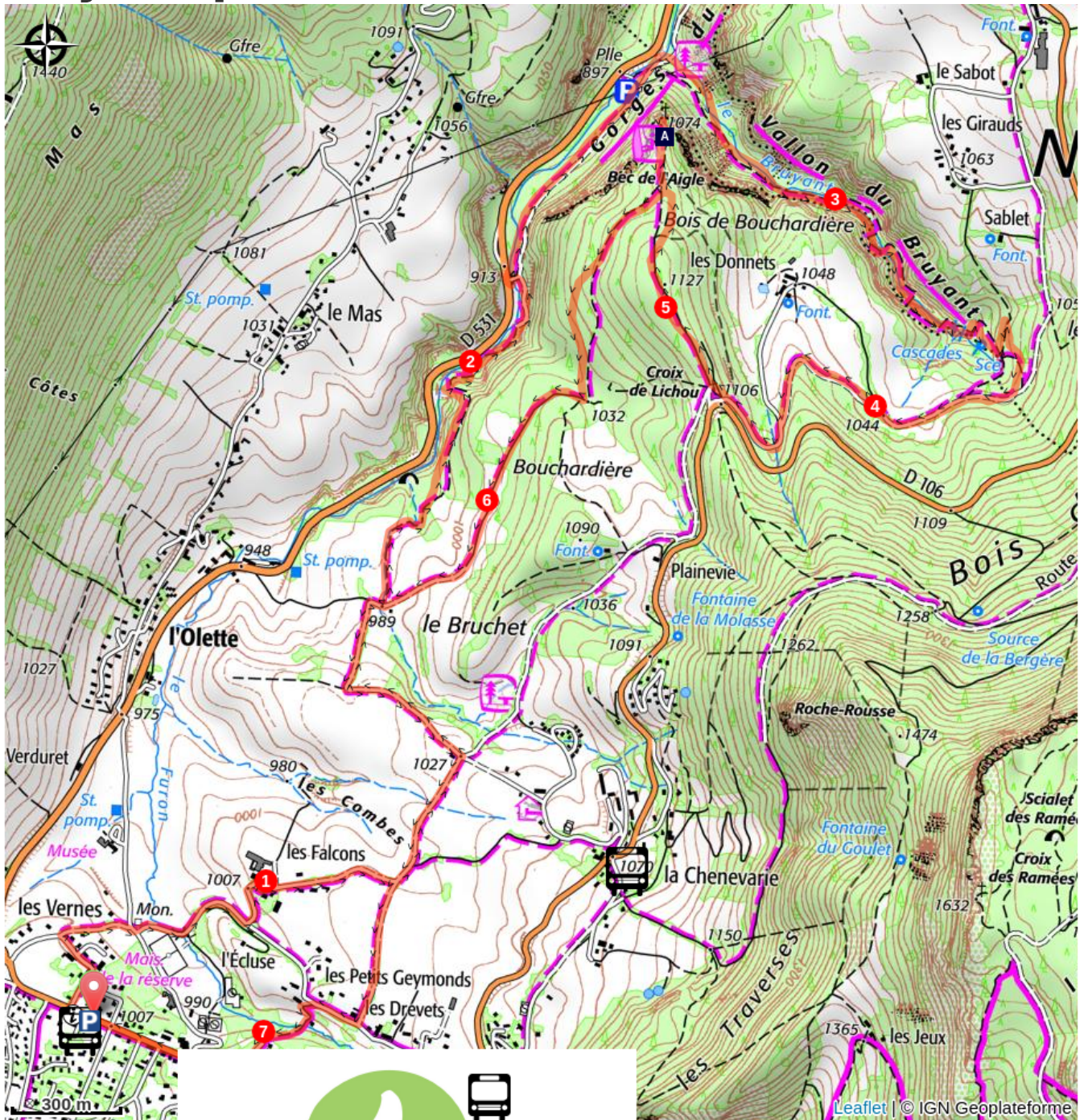
Arrival : The Tramway, Tourist Office of Lans-en-Vercors

Markings :  GTV VTT  Via Vercors  PR

Departure of the Tramway, in front of the Tourist Office, direction Bec de l'Aigle 6 passing by La Croix 1, Petits Geymonds 2, Pra Long 3, La Grange Verte 4 Combe 5. At the Bec de l'Aigle take the direction Le Haut Bruyant 8 passing by La Croix de Lichou 7.

From the HautBruyant you enter a gorge in the Gorges until the Bruyant 9 (alt 894 m). The return to Lans-en-Vercors is via a picturesque path, along the Furon, then via the Danes trail (Passage to avoid however in wet weather) and finally to the plateau of Val de Lans by La Combe. From there, the return to the village is carried out by the same way that on the way.

# On your path...



Bec de l'Aigle (A)

# All useful information

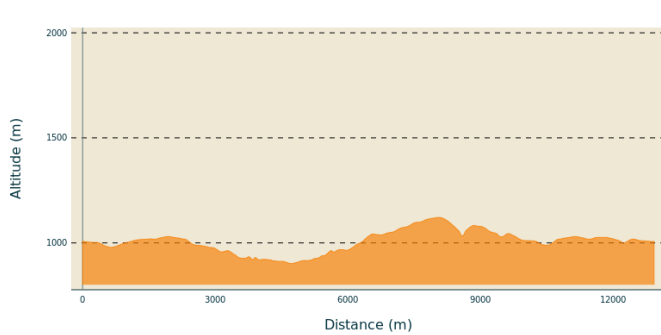
## **Advices**

Be vigilant in rainy weather, between Le Bruyant and La Combe, slippery and delicate passages!

Use the passages provided to cross the fences, close the gates and barriers behind you.

Stay on the marked paths is also respect private property.

## **Altimetric profile**



Min elevation 901 m  
Max elevation 1121 m

## Transports

### En train :

[Gare SnCF de Grenoble](#)

### En bus :

Avec les cars Régions prendre la [ligne T64](#) ou la [ligne T65](#) par Engins pour rejoindre Lans : Arrêt au départ de ce parcours devant l'office de Tourisme.

Le calculateur d'itinéraire multimodal OÙRA vous donne accès à toutes les correspondances entre les trains régionaux, transports urbains et ligne de bus départementale : <https://www.oura.com/>

### En Autostop :

Possibilité d'aller et/ou retour en autostop avec Rezo Pouce sur Lans-en-Vercors et Grenoble (retrouvez la carte des arrêts sur [www.rezopouce.fr](http://www.rezopouce.fr))

### En covoiturage :

Proposez ou réservez votre covoiturage avec la plateforme régionale [Mov'ici](#).

## Access

From Sassenage follow the D531 towards Lans-en-Vercors.

From Villard-de-Lans, follow the D531 towards Lans-en-Vercors.

### Advised parking

Parking of the Tourist Office / Bus station

## Information desks

OTI 4M - Bureau d'information de Saint-Nizier-du-Moucherotte  
Place du Village, 38250 Saint-Nizier-du-Moucherotte

[info.stnizierdumoucherotte@otivercors.com](mailto:info.stnizierdumoucherotte@otivercors.com)

Tel : 04 76 53 40 60

<https://www.vercors-experience.com/>

OTI 4M - Bureau d'information de Lans-en-Vercors  
246 avenue Léopold Fabre, 38250 Lans-en-Vercors

[info.lansenvercors@otivercors.com](mailto:info.lansenvercors@otivercors.com)

Tel : 04 76 95 42 62

<https://www.vercors-experience.com/>

# On your path...

---



## Bec de l'Aigle (A)

From Bec de l'Aigle, you can admire the panorama of the whole of your itinerary: the Furon gorges are in front of you, with the hamlet of Les Aigaux and the Plateau de la Molière in the background.

Attribution : m\_rocheblave