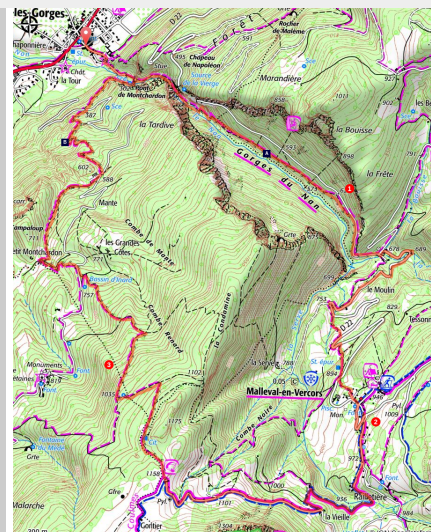


The Gorges du Nan

Royans-Isère-Coulmes - Cognin-les-Gorges



(m_rocheblave)

This rather shaded hike makes you discover the sumptuous Gorges du Nan.

The small village of Malleval-en-Vercors as lost in the wilderness also does not leave insensitive!

Join the magnificent Gorges du Nan (site classified Espace Naturel Sensible) and their freshness, before discovering the village of Malleval-en-Vercors, a place of resistance during the Second World War. The return takes place mainly in undergrowth, in the middle of beech, oak and boxwood.

Useful information

Practice : By walk

Duration : 5 h

Length : 14.0 km

Trek ascent : 1070 m

Difficulty : Difficile

Type : Boucle

Themes : Géologie, Histoire et patrimoine, Résistance

Trek

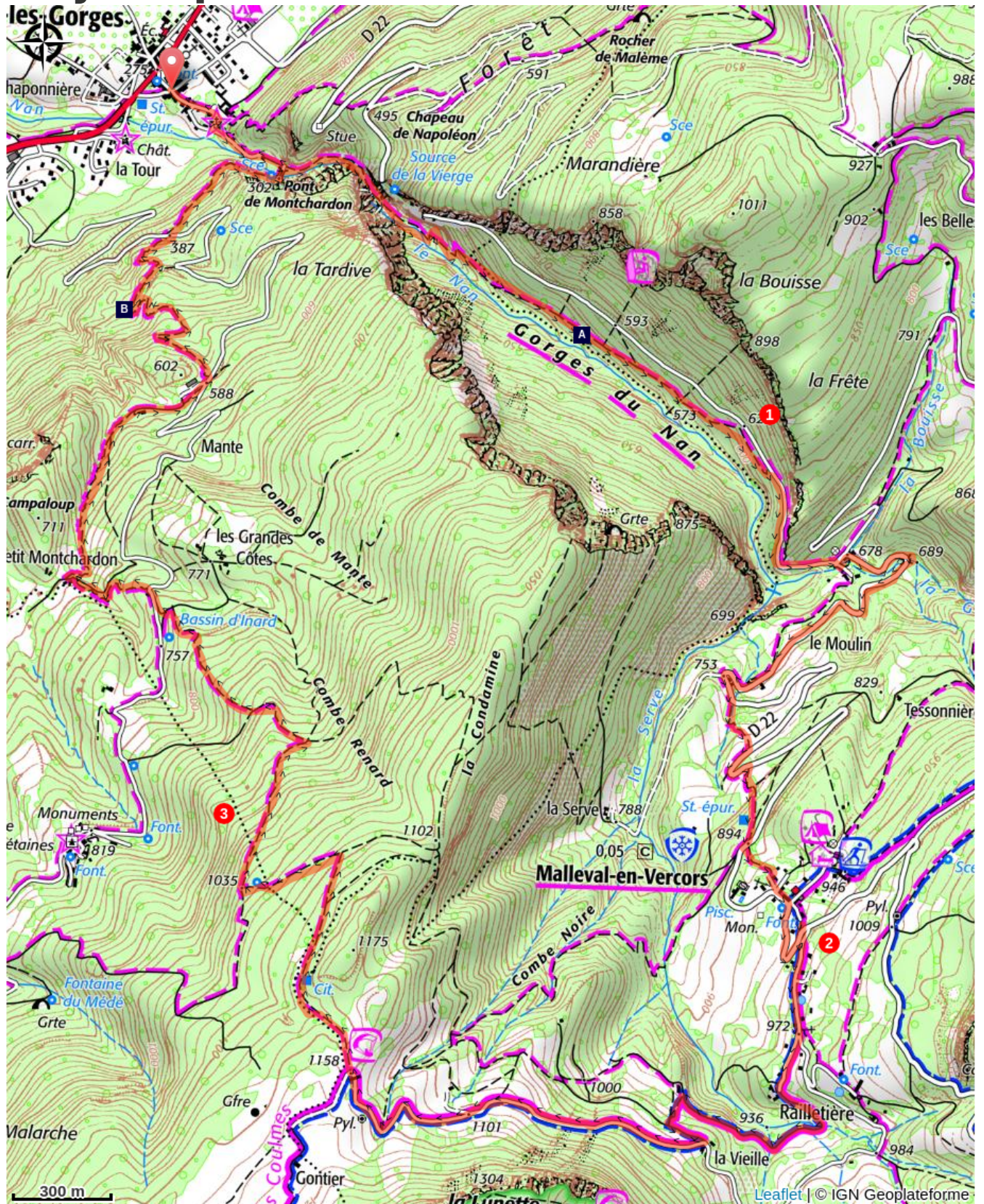
Departure : Cognin-les-Gorges (parking place of the village)

Arrival : Cognin-les-Gorges (parking place of the village)

Markings :  GTV  VTT  PR  GRP

Departure from Cognin-les-Gorges parking place of the village, take the direction of Mallevial. The walk begins by passing the Pont de Montchardon 1, then continues to the bottom of the Gorges du Nan along the creek of the same name (yellow-green markings). Arriving at the crossroads Gorges du Nan 2, rally La Croix de Gene 4 passing by Le Moulin 3. Continue to La Fontaine 5 (hostel Galopins to 200 meters). From then on, you will follow the yellow-red markings of the Tour des Coulmes passing by Croix de Railletière 6, Chez Courtieu 7, La Vieille 8 and Le Fayard de Gontier 9. From there, start the return and the descent on Cognin-les-Gorges (again yellow-green markings) joining Freissinet 10 then Bassin d'Inard 11. The path leads you to Pont de Montchardon and then to the village.

On your path...



The Gorges du Nan (A)

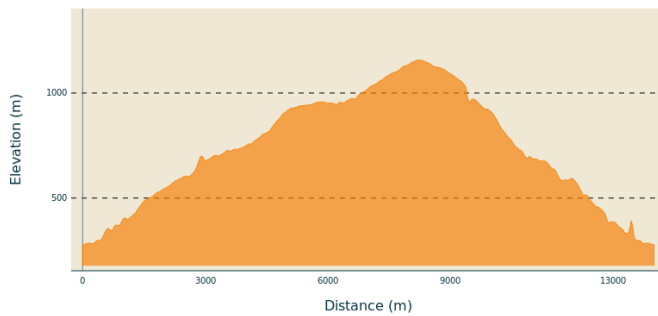
The inclined slab (B)

All useful information

Advices

Caution in rainy weather, some passages can be delicate and slippery!

Altimetric profile



Min elevation 278 m
Max elevation 1157 m

Transports

En train : [Gare SNCF de Grenoble](#)
Calcul d'itinéraire avec <https://www.oura.com/>

En bus : Transisère [ligne T60](#) (Grenoble - Pont-en-Royans, arrêt à Cognin-les-Gorges)

En Autostop :
Retrouvez tous les arrêts pour aller ou repartir sur www.rezopouce.fr en autostop

En covoiturage :
Partagez ou réservez votre covoiturage avec [Mov'ici](#), la plateforme de covoiturage régionale.

Access

From Romans-sur-Isère, take the A49 towards Grenoble, then take exit number 10 to Cognin-les-Gorges. Follow the D1532 until the village, parking on the village square.

From Grenoble take the A48 then the A49 towards Valence, take the exit n ° 10 in the direction of Cognin-les-Gorges. Then follow the D1532 to the village, parking on the village square.

Advised parking

Parking in the Rue de la Vieille Église

 **Information desks**

Office de tourisme Saint-Marcellin-
Vercors-Isère, bureau d'information de
Pont-en-Royans

48 Grande Rue, 38680 Pont-en-Royans

tourisme@saintmarcellin-vercors-
isere.fr

Tel : 04 76 385 385

[http://tourisme.saintmarcellin-vercors-
isere.fr/](http://tourisme.saintmarcellin-vercors-
isere.fr/)

On your path...



The Gorges du Nan (A)

The Gorges du Nan, a remarkable site that recently earned them to be classified as a Sensitive Natural Area. Indeed, these gorges shaped by the Nan, are dominated by impressive cliffs, where one can study the geological history of the Vercors, thanks to the different geological strata, vestiges of sedimentary deposits for thousands of years. The natural heritage is also rich, both for its flora, including the elegant doradilla (small fern) or the juniper thurifera, as for its fauna, with the presence of the peregrine falcon.

Attribution : m_rocheblave

The inclined slab (B)

At about ten meters on the right of the trail, you can observe a geological curiosity with this inclined slab. The men had set up a shelter under rock quite original!