

# The different faces of Mont Aiguille

Trièves - Clelles



(M. Rocheblave)



## A loop with plenty of surprises under the gaze of Mont Aiguille.

This hike has a forest, bucolic atmosphere with some unforgettable sites along the way: the Darné viaduct and the hamlet and chapel of Trézanne not to mention splendid viewpoints for contemplating Mont Aiguille.

## Useful information

Practice : By walk

Duration : 2 h

Length : 4.8 km

Trek ascent : 121 m

Difficulty : Facile

Type : Boucle

Themes : Histoire et patrimoine, Point de vue, Accessible en transport en commun, patrimoine routier

# Trek

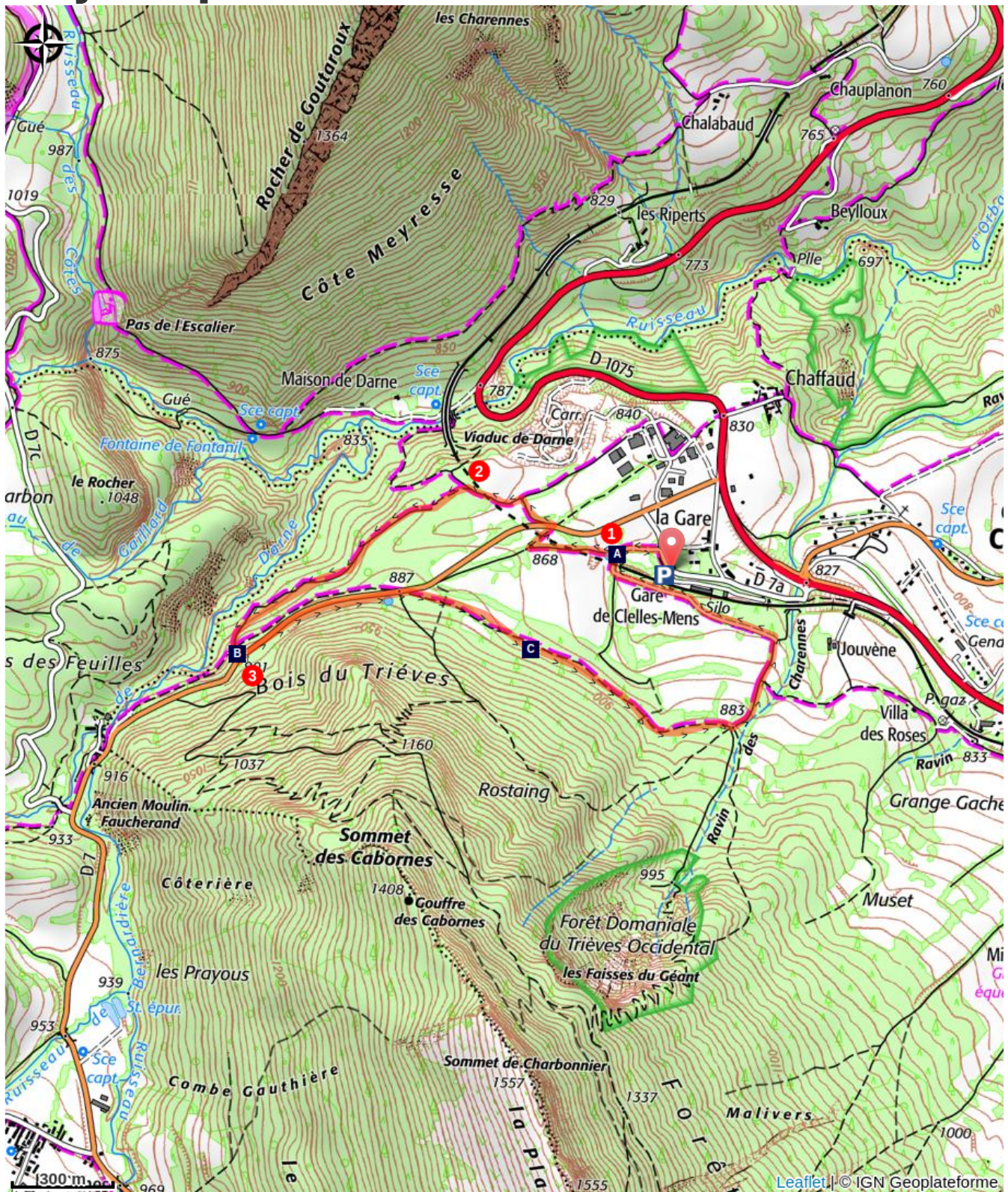
Departure : Clelles

Arrival : Clelles

Markings :  PR  GTV à pied

1. On leaving **the train station**, take the street on the left (north-west) to head towards the **reservoir**. Carry on towards **Génie** and **Bois des Chaux**.
2. Continue until you get to **Darne**, where you will be at the foot of the **Darne** viaduct. Cross under the viaduct and climb up to the hamlet of **Trézanne** via **Au Fontaniou**.
3. In **Trézanne**, walk to the chapel of the hamlet so you can enjoy a breathtaking view of Mont Aiguille. Now return on the D7C towards **Ruthière** via **Les Ruines** (crossing a stream by a ford), **Aux Fontaines** and **Ruthière**. A little further on, take the path on your left in the direction of **La Scie/Clelles**.
4. At **La Scie**, carry on along the D7 in the direction of **the train station**. After you pass a huge rock, take the track on the left and follow the path along a canal and continue on the PR until you get to the D7.
5. Cross the road, and walk along the path in front of you to get to **Mailletère** and **the train station**.

# On your path...



The mountain with a nasty sting (A)  
The Clelles canal (C)

An irrigation canal (B)

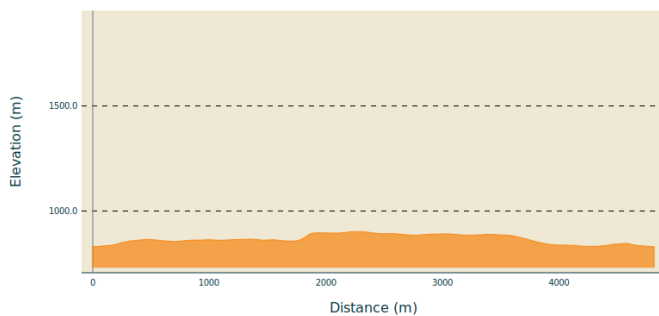
# All useful information

## **Advices**

Use the purpose-built throughways to cross fences; shut gates and barriers behind you.

Keeping to the signposted paths means you'll respect private property.

## **Altimetric profile**



Min elevation 830 m  
Max elevation 902 m

## **Transports**

### **To and from**

**By train :** Clelles train station - Line Grenoble-Gap

The OÙRA multimodal route planner provides information about all the connections between regional trains, urban transport and departmental bus lines: <https://www.oura.com/>

OR

### **By bus :**

[Line T95](#) from Grenoble or Clelles train station, and stop at Monestier de Clermont.

Then reach the car park by hitchhike or carpooling.

## **Access**

From Monestier-de-Clermont, take the departmental road D1075/ E712 to Clelles.

The train station is located in the West of Clelles, on the other side of the departmental road.

## **Advised parking**

the train station

## **Information desks**

Office de tourisme du Trièves  
300 chemin de Ferrier, 38650  
Monestier-de-Clermont  
Tel : 04 76 34 33 40  
<http://www.trieves-vercors.fr/>

# On your path...

---



## The mountain with a nasty sting (A)

The name «Mont Aiguille» appears quite late on geographical maps, not before the 17th century. However, the mountain is not pointed like a needle, as suggested by its name. It is possible that the local dialect term «aguïo» for a pointed rock might have been confused with the Occitan term «eyguèyo» equivalent to «aiguière» in French, meaning a water vessel. Thus, Mont Aiguille would most likely come from the Occitan name for this mountain (Peiro Eyguèyo), which refers to a «Mountain of Springs», because of the numerous springs at the foot of its northern face (Francès, 1997).

Attribution : A. Poiraud

---



## An irrigation canal (B)

In 1821, a group of local farmers constructed a canal to irrigate parts of their land and gardens in Clelles. The canal was fitted with numerous sluice gates, but only members of the Syndicate were entitled to have access to the water supply.

At the beginning of the 20th century, Mr Corrèard, a local miller, leased part of the rights to operate an electric power plant. In addition to running his mill, he became an electricity producer and supplied the commune of Clelles. In 1948, the power plant was connected to the national electricity grid!

Attribution : M. Rocheblave

---



## The Clelles canal (C)

The piped water is a story of slope. Controlling the slope allows to control the regularity of the water flow.

Elevation at start : 897 m

Elevation at arrival : 880 m

Length : 3 km